

Dokumentation

Konfiguration Mailserver

Inhalt:

1. Installation von Mailserver
2. Mailserver konfigurieren
3. Mailclient konfigurieren

1. Installation von Mailserver

Posteingangsserver courier:

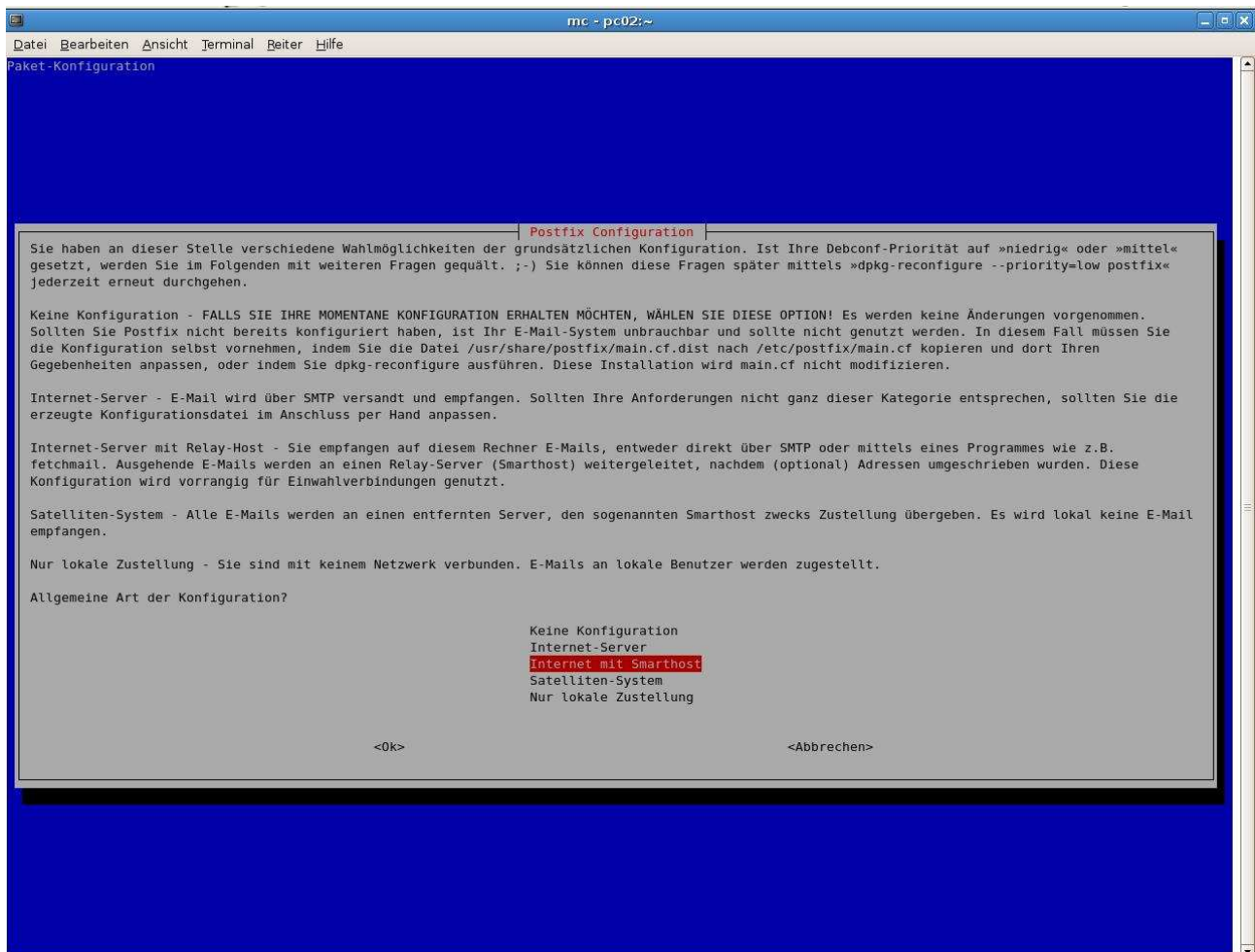
apt-get install courier-pop

WWW Administration anlegen: nein

apt-get install courier-pop-ssl

Postausgangsserver postfix:

apt-get install postfix



Hostname: gl.rmdir.de

SMTP Relayserver: smtp.t-online.de

2. Mailserver konfigurieren

/etc/postfix/main.cf editieren:

```
append_dot_mydomain = yes
```

```
#mailbox_command = procmail -a "$EXTENSION"
```

```
home_mailbox = Maildir/
```

```
apt-get install fetchmail fetchmail-ssl
```

/etc/default/fetchmail anpassen:

```
START_DAEMON=yes
```

/etc/fetchmailrc anlegen:

```
poll rdfpop.rmdir.de proto pop3
```

```
no dns
```

```
envelope "X-Original-To:"
```

```
localdomains g1.rmdir.de aka g1.rmdir.de
```

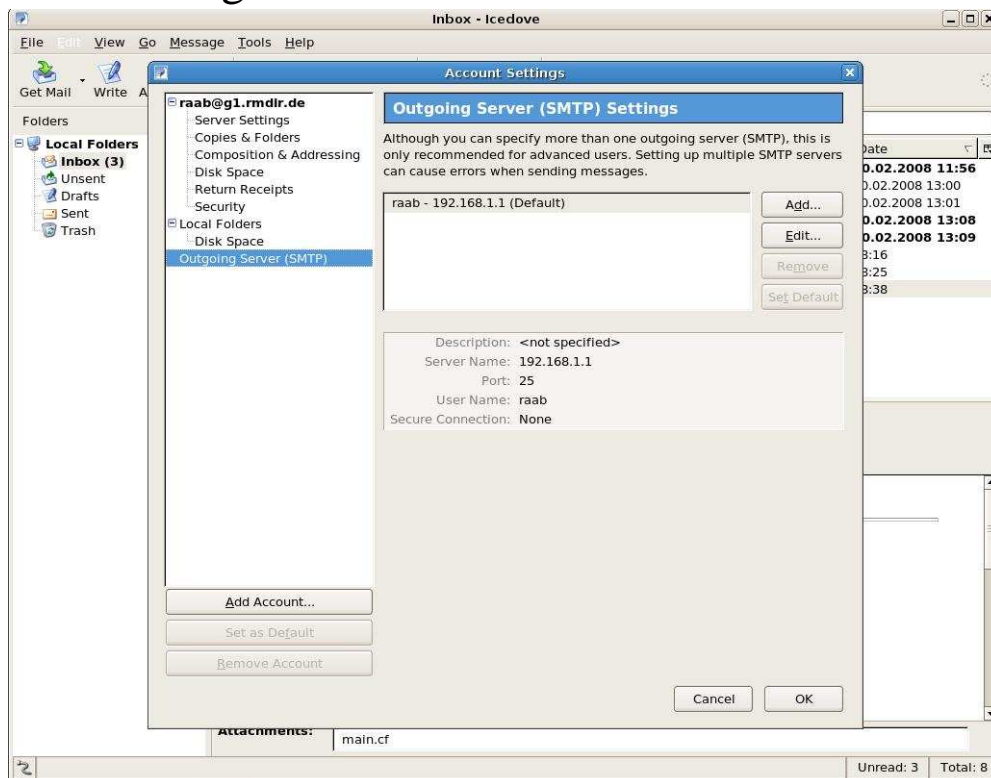
```
user "rdfest" is root * here,
```

```
password "passwort" fetchall mimedecode ssl
```

Mail abholen mit folgendem Kommando:

```
fetchmail -a -v -f /etc/fetchmailrc
```

3. Mailclient konfigurieren



Dokumentation BSA Mailserver

